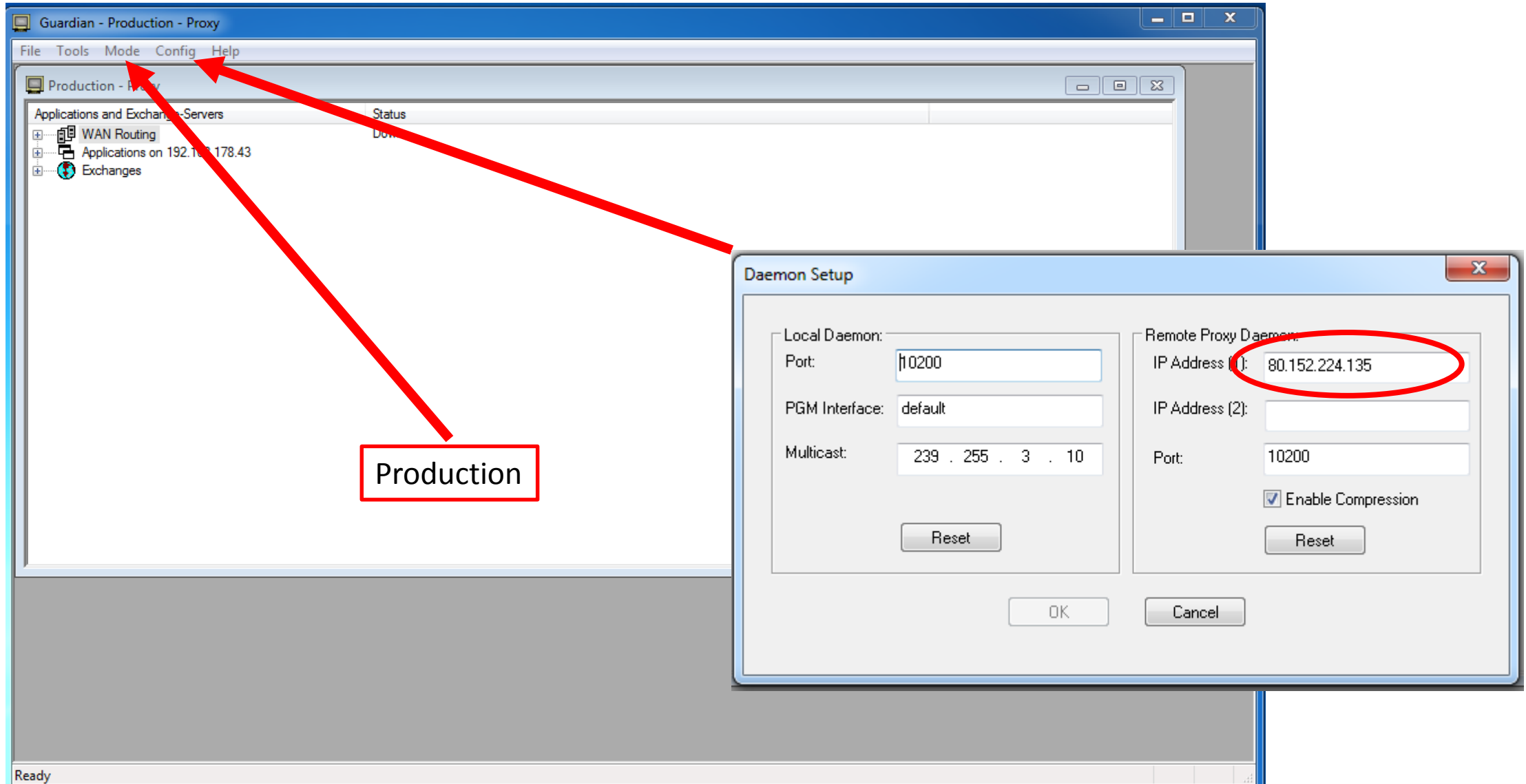


X-Trader Setup für Simulation

2015-11-11

X-Trader Simulations Setup - Guardian



X-Trader Simulations Setup - Guardian

The image shows the 'Guardian - Production - Proxy' application window. The 'File' menu is highlighted with a red arrow pointing to a red box labeled 'Trader Login'. Another red arrow points from this box to the 'TT Exchange Login - Trader (Production)' dialog box. In the dialog, the 'Exchange List' shows 'TTSIM'. The 'Member' field is 'TTSIM', 'Group' is '004', and 'Trader Id' is 'USERNAME', which is circled in red. Other fields include 'Password', 'CLR', 'Default', and 'Pref.' (192.168.7.10). Buttons for 'Login', 'Change Passwd', and 'Close' are at the bottom. A license agreement notice is at the bottom of the dialog.

Guardian - Production - Proxy

File Tools Mode Config Help

Production - Proxy

Applications and Exchange-Servers Status

WAN Routing Down.

Applications 192.168.178.43

Exchanges

Ready

TT Exchange Login - Trader (Production)

Exchange List:

TTSIM

Member TTSIM

Group 004

Trader Id: USERNAME

Password:

CLR:

Default:

Pref. 192.168.7.10

Login Change Passwd Close

Use of this software and related services and documentation is governed by a software licensing agreement.

[View license agreement](#)

For additional questions, please contact your Clearing Firm.

X-Trader Simulations Setup – Start X-Trader

